



INSTRUCTION MANUAL

Technical Support

Connects2 want to provide a fast and suitable resolution should you encounter any technical issues. With this in mind, when contacting Connects2, try to provide as much Information as possible. This will speed up the process and help us to help you.

Please use our dedicated online technical support centre:
support.connects2.com

CAM-LR5

Reversing camera add on solution for
Land Rover Defender
Compatible with 2007 – 2016 vehicles



Subscribe to our YouTube Channel
for installation guides and tips...
www.youtube.com/connects2

Connects2.com

Designed and
Engineered
in the UK. 

PRIOR TO INSTALLATION

Read the manual prior to installation. Technical knowledge is necessary for installation. The place of installation must be free of moisture and away from heat sources. Please, ensure you use the correct tools to avoid damage to the vehicle or product. Connects2 can not be held responsible for the installation of this product. Connects2 want to provide a fast and suitable resolution should you encounter any technical issues. When contacting Connects2, try to provide as much Information as possible. This will speed up the process and help us to help you.

Please use our dedicated online technical support centre:
support.connects2.com

DISCLAIMER

The information provided in this document is subject to change without notice due to manufacturer changes and/or improvements to the product/s. This instruction manual is based on documented data and research. The manufacturer of this product cannot be held responsible for any changes made to the vehicle by the manufacturer or damages that may occur through the installation of this product in accordance with the steps outlined herein.



Subscribe to our YouTube Channel
for installation guides and tips...
www.youtube.com/connects2

Connects2.com

Preparation & Installation



Disconnect the negative battery terminal to avoid any short circuits.



Read and adhere to all manufacturers cautions and warning recommendations regarding the electrical systems in your vehicle.



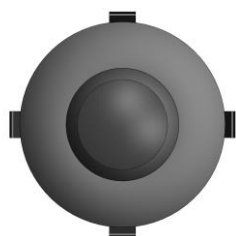
When carrying out any maintenance on your vehicle the use of proper tools are recommended. The use of a voltmeter or computer-safe LED probe when checking wiring is advisable. Improper use of test equipment can cause damage to the vehicle's ECU or diagnostic system.

INSTALLATION

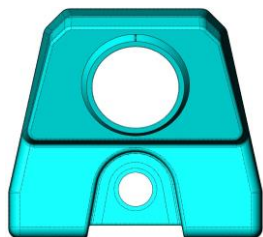
1. Remove all necessary screws and panels to remove the roof lining.
2. Remove the rear window screen washer in preparation for camera installation.

Connects2.com

Camera Installation into the Housing



CAMERA



HOUSING

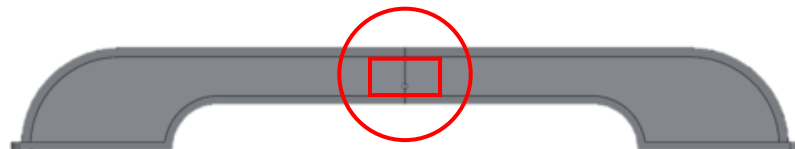


CAMERA &
HOUSING

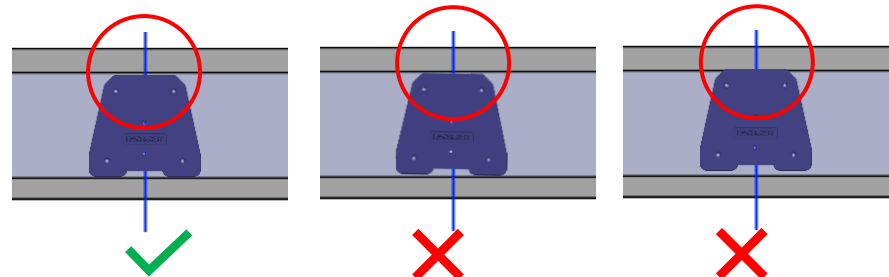
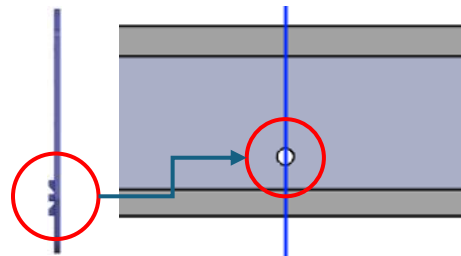
INSTALLATION

1. Connect and power up the camera to determine orientation.
2. After orientation mark the top so it can be clearly identified as the top.
3. Insert the camera aligning the mark you made with the alignment mark on the housing.

Installation to the Vehicle



1. Ensure the surface is dent free then place masking tape on the area in the red box to aid hole position marking.



EXTREMELY IMPORTANT

2. Place drilling template so the protruding section sits in the hole, and the top edge should align perfectly with the top lip, if this does not line up then adjust the existing hole by either enlarging the entire hole slightly or by filing the lowest part of the down to make the template fit. DO NOT continue until the drill template fits correctly.

Installation to the Vehicle

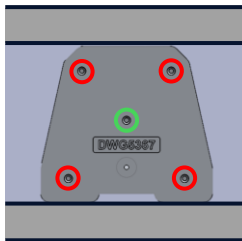
MARKING HOLES AND DRILLING

With drilling template correctly aligned mark the hole positions (five in total) It is easier to see marks if you placed the masking tape as earlier suggested. Mark the hole positions by using a fine tipped pen through the small alignment positions (the holes are small to ensure more accurate marking)

After marking remove template, centre punch positions for accuracy then drill out.

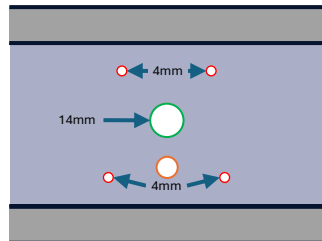
- Red circles holes are 4mm
- Green circle hole is 14mm
- Orange hole is the OEM spray mount

Use of a step drill is recommended, be sure to debur the holes after drilling.



SURFACE PREPARATION

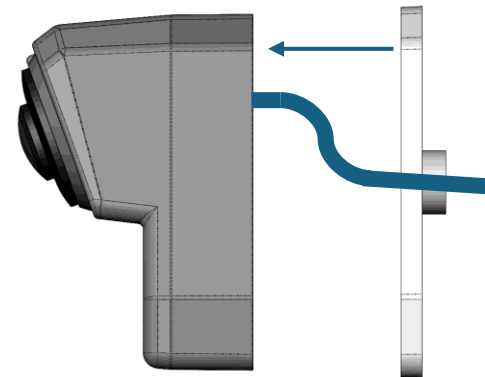
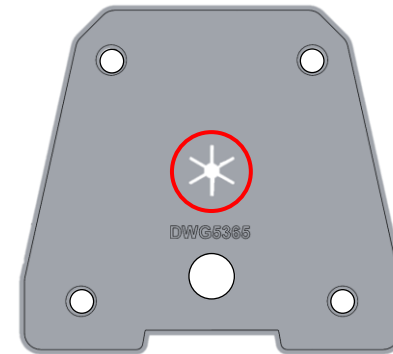
After holes are drilled and deburred, remove masking tape and thoroughly clean the surface.



Installation to the Vehicle

FITTING THE GASKET

Feed camera wire through hole then fit gasket to main body
Circled Red



Installation to the Vehicle

INSTALLING ASSEMBLY

With gasket fitted the entire assembly can be fixed to the vehicle.

Warning MAX torque

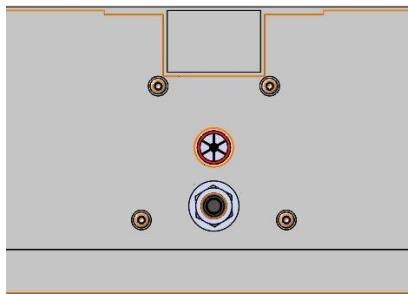
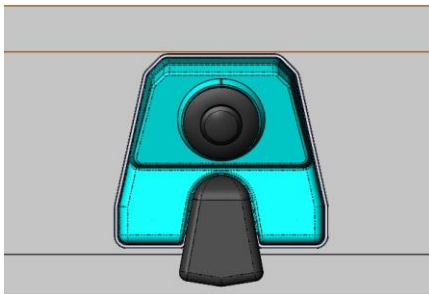
Newton Metre N*m= 0.4

Newton Centimetre N*cm = 40

Foot Pound lb-ft = 0.037

Inch Pound in-lb = 3.54

1. Insert screws and washers Loosely
2. Insert OEM washer jet
3. Tighten screws / washer nut finger tight
4. Tighten screws in circular motion in small stages until max torque is reached
5. Tighten OEM spray nut up to max torque



Installation to the Vehicle

Feature	(CVBS / AHD CAMERA)
Image Sensor	1/3" Optical Format 3.87 V/lux. Sensitivity
Resolution	CVBS - 600 TV Lines AHD - 720P
Minimum Illumination	0.1 Lux
Dimensions	25mm Cut-out
TV System	NTSC (30FPS)
Waterproof Rating	IP69K
Operating Temp	-20 degrees > +70 degrees
Horizontal Angle	150 degrees for AHD 145 degrees for CVBS 1080 (H) x 720 (V) Effective Pixel Array
Parking Lines	Yes (Removable)
Adjustable Image	Yes (Mirror/Normal)
Power Supply	12V - 24V

NOTICE: Specifications are subject to change without prior notice. The manufacturer reserves the right to make improvements to the product or modify its design without any obligation to notify users in advance. For the latest product updates, please refer to the manufacturer's website or contact customer support.

[illegible]

This image shows a blank sheet of white paper with horizontal ruling lines. The lines are evenly spaced and extend across the width of the page. There are no margins, text, or other markings on the paper.