

Adaptiv Mini Fitting & User Guide

CAM-PE1-AD

For Vehicles with 7" Touchscreen System,
Citroen eMyWay 7" 16:9 Colour Display

For Vehicles with OEM Aux Input.

WWW.ADAPTIV-MULTIMEDIA.COM

Adaptiv Mini

Adaptiv Mini allows HDMI & Camera input to the OEM screen.

This plug and play Mini interface adds HDMI to connect your Apple or Android device, allowing you to mirror your smartphone display on the vehicle's original screen. Inputs for front and rear aftermarket cameras also come as standard.



HDMI INPUT



**FRONT & REAR
CAMERA**

Application

For vehicles with 7" touchscreen system or Citroen eMyWay 7" 16:9 colour display. For vehicles with OEM Aux input only

Citroen

C3 Picasso	2012>
C4/C4 Picasso/C4 Grand Picasso	2010>
C4 Cactus	2012 - 2017
C5 (RD/TD)/C5 Tourer (RD/TD)	2012>
DS3	2010 - 2016
DS5	2012>

Peugeot

208	2011>
308 (T9)	2013>
3008	2013 - 2016
508	2014 - 2018

Kit Includes

- Adaptiv Interface
- Vehicle Harness

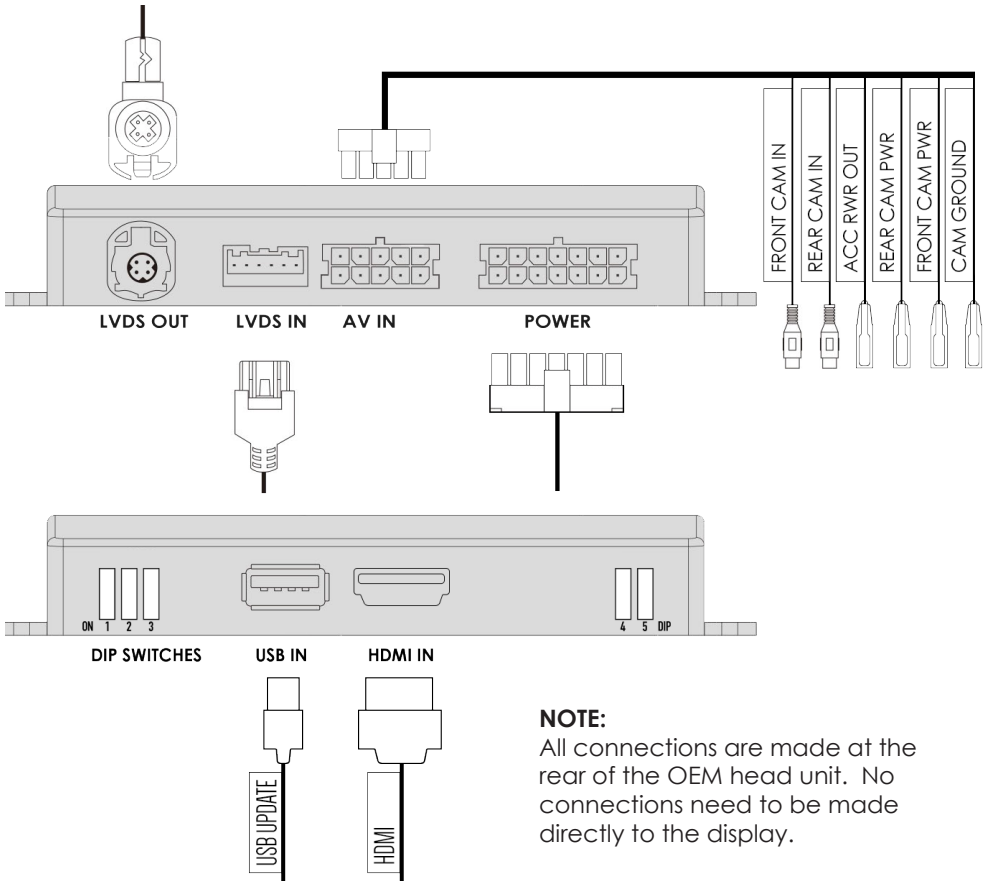
Prior to installation

Read the manual prior to installation. Technical knowledge is necessary for installation. The place of installation must be free of moisture and away from heat sources. Connects2 cannot be held responsible for the installation of this product.

Technical Support

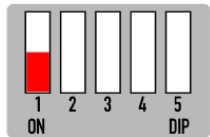
Connects2 want to provide a fast and suitable resolution should you encounter any technical issues. With this in mind, when contacting Connects2, try to provide as much Information as possible. This will speed up the process and help us to help you.

Please use our dedicated online technical support centre: support.connects2.com

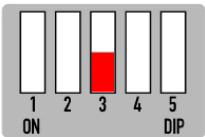


NOTE:
All connections are made at the rear of the OEM head unit. No connections need to be made directly to the display.

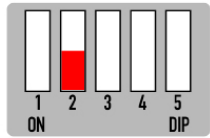
DIP SWITCH SETTINGS



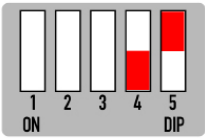
DIP 1
If the vehicle has OEM reverse camera
(ON: YES OFF: NO)



DIP 3
If the vehicle has after-market reverse camera (ON: YES OFF: NO)

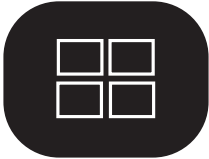


DIP 2
If the vehicle has after-market front camera (ON: YES OFF:NO)



DIP 4
Citroen C3 2018 - ON
Other Vehicles - OFF
DIP 5
OFF

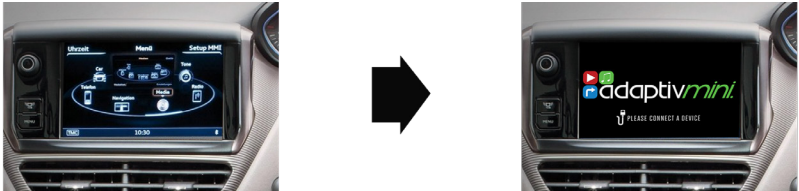
Button Configuration



List/Menu Button

HDMI Access

Select Aux In from the OEM source menu.
Hold **LIST/MENU** Button for 2 seconds to switch between OEM screen and Adaptiv Mini HDMI screen



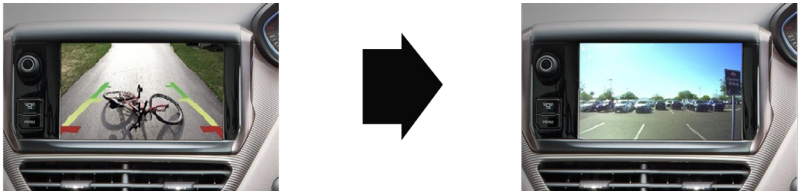
Video In Motion Warning - 10 MPH

Double press **LIST/MENU** Button to disable the video in motion warning message

Rear and Front Camera Access

From either HDMI mode or OEM mode

1. Select reverse gear for reverse camera
2. Deselect reverse gear - will go to after market front camera (if DIP 2 ON)
To cancel front camera drive over 10 MPH or double press **LIST/MENU** Button



Front Camera Access

Double press **LIST/MENU** Button to enter the front camera screen (if DIP 2 is ON)
Double press **LIST/MENU** Button to exit front camera

View Version Number

Hold **LIST/MENU** Button for 8 seconds to enter firmware information screen