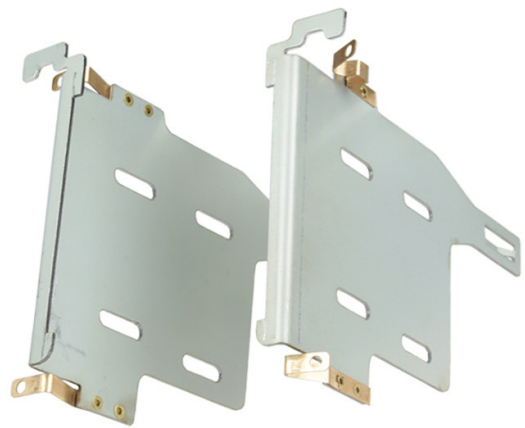




CT23AU11/L

Double DIN Fitting Kit for Audi (Non-MMI) Vehicles



IN THE KIT

- Double DIN Fascia Panel*
- Brackets
- Lower Bracket
- Hex Screws (x8)
- Hex Bolts (x2)

**Note the fascia panel showcased throughout this instruction manual is for Right hand vehicles. The procedure is identical for Left hand vehicles, although you will need to use the CT23AU11L fascia panel during installation.*

APPLICATION

Note: Application data is subject to change at any time

Audi R8 (Type 42)

2007 - 2015

Note: vehicle will need modification. Please familiarise yourself with the instructions before undertaking installation.

FEATURES

- Allows for the installation of a double DIN aftermarket stereo
- Includes mounting brackets and fitting accessories
- Finished in matt black to match vehicle dashboard

DISCLAIMER

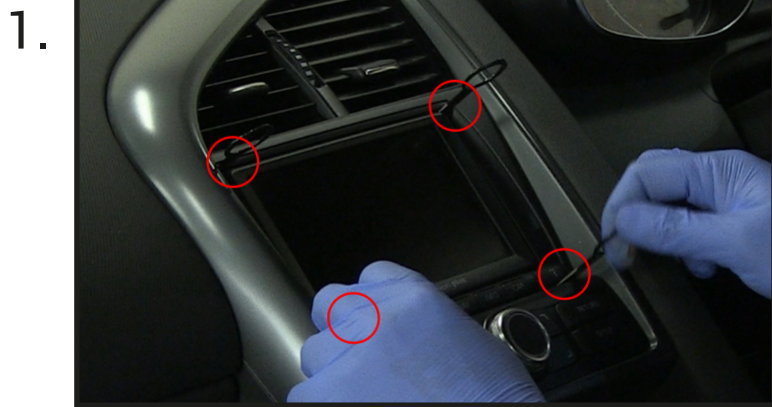
The information provided in this document is subject to change without notice due to manufacturer changes and/or improvements to the product/s. This instruction manual is based on documented data and research. The manufacturer of this product cannot be held responsible for any changes made to the vehicle by the manufacturer or damages that may occur through the installation of this product in accordance with the steps outlined herein.

PRIOR TO INSTALLATION

Read the manual prior to installation. Technical knowledge is necessary for installation. The place of installation must be free of moisture and away from heat sources. Please ensure that the correct tools are used during the installation to avoid damage to the vehicle or product. **Connects2 can not be held responsible for the installation of this product.**

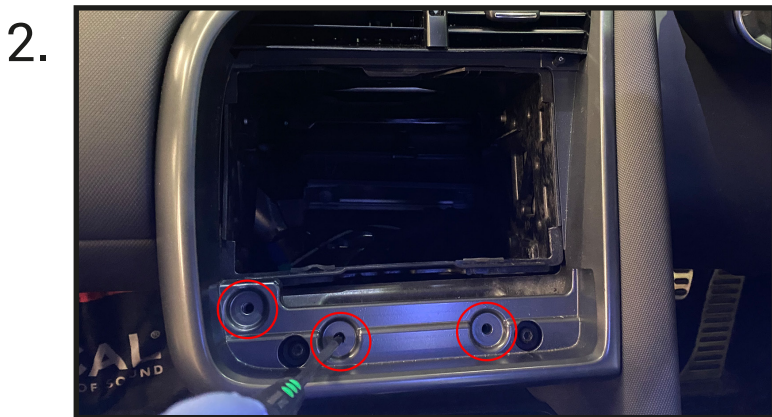
INSTALLATION GUIDE

DASH DISASSEMBLY

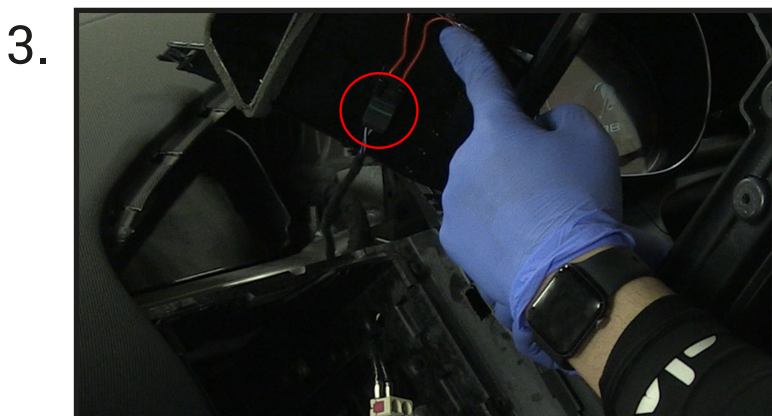


Begin by using 4x radio release keys to release the main head unit. (*release keys sold separately*)

Once the head unit is out, carefully pull the whole unit out of the dashboard and disconnect all of the wiring.



With the main head unit out of the dashboard, undo the following three screws to release the main fascia.



Using a panel removal tool, remove the main fascia off the dashboard and disconnect the air vent LED connection in the process.

BRACKET ASSEMBLY



Attach the brackets to the new stereo using the screws within the kit.

These brackets need to be attached upright so that the metal tab is at the top (*see image for correct orientation*).

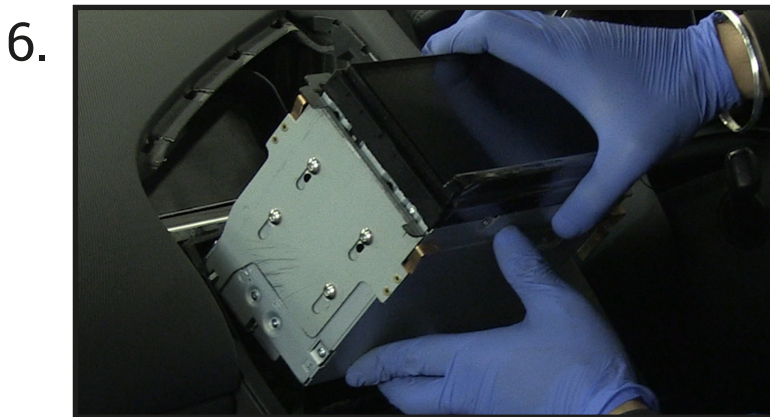
INSTALLATION GUIDE

DASH MODIFICATION

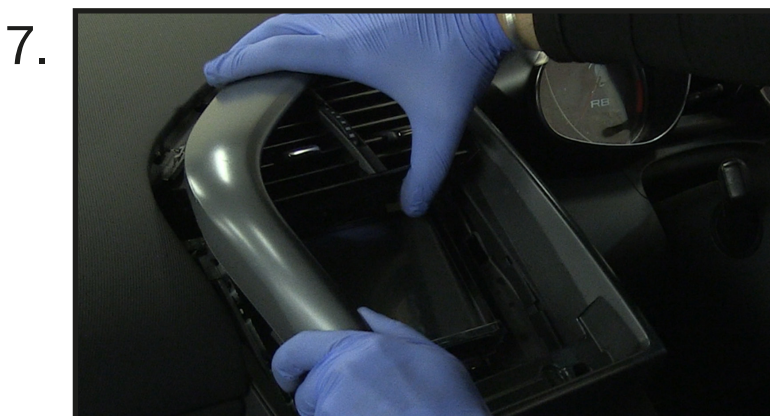


5. At this point you will need to modify the dashboard. Using a file or a cutting tool, begin to file away the inside lip of the four highlighted corners of the main dash cavity. Take due care not to remove too much of the interior plastic. During this modification, it is best to test fit the unit (with brackets attached) in between cutting, to ensure the perfect fit.

DASH ASSEMBLY



Once happy with the modification, connect any/all the stereo connections and stow the head unit into the dash cavity (*see image for correct orientation*).



Once the head unit is flush in the dashboard, bring back the OEM fascia and install this over the new stereo (connecting the air vent LED connector in the process).

Need help? Visit support.connects2.com/tickets/technical

INSTALLATION GUIDE

DASH ASSEMBLY

8.



Take the lower bracket and place it as seen in the image. This then needs to be screwed into place using the long bolts that come with the kit.



8. Once the lower bracket has finally been installed, place the fascia over top. The magnets found on the rear will firmly hold it in place. This will then complete the installation.

How to tell if your vehicle is 'MMI'



..... Audi with MMI



..... Audi without MMI

Need help? Visit support.connects2.com/tickets/technical