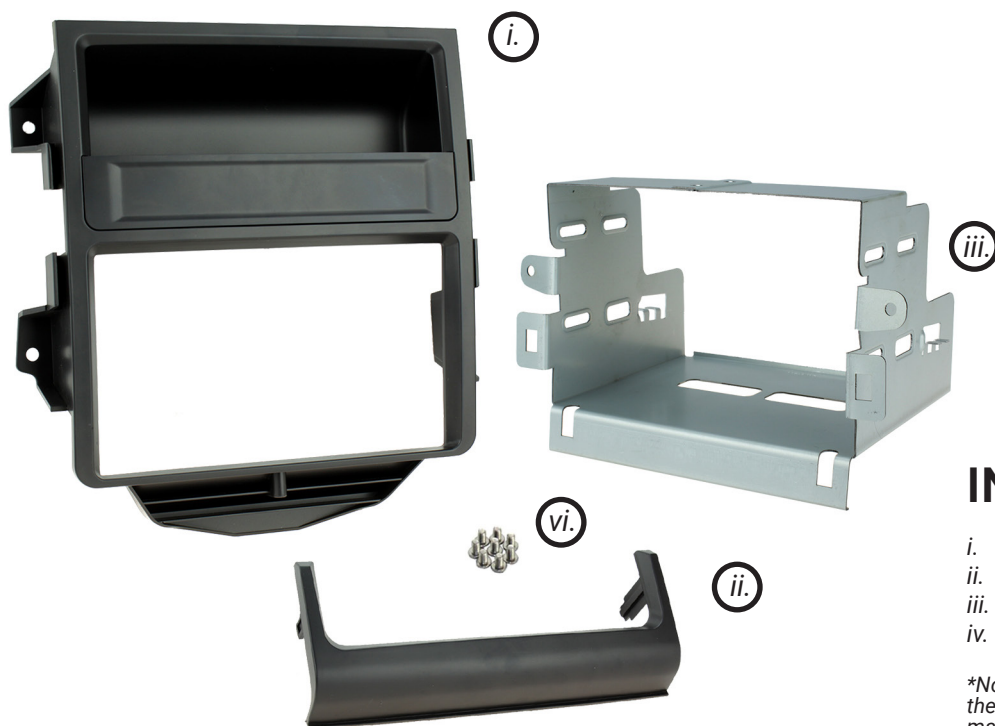




CT23PO07

Double DIN Fitting Kit for Porsche Vehicles



IN THE KIT

- i. Double DIN Fascia Panel*
- ii. Bottom Trim
- iii. Head Unit Cage
- iv. Hex Screws (x8)

**Note that the panel which forms the lip of the pocket may come detached from the main panel. If this is the case, simply snap the piece onto the main panel before beginning the installation*

APPLICATION

Note: Application data is subject to change at any time

Macan (95B) 2014 - 2016

RECOMMENDED TOOLS

- Panel Removal Tool
- Screwdriver

FEATURES

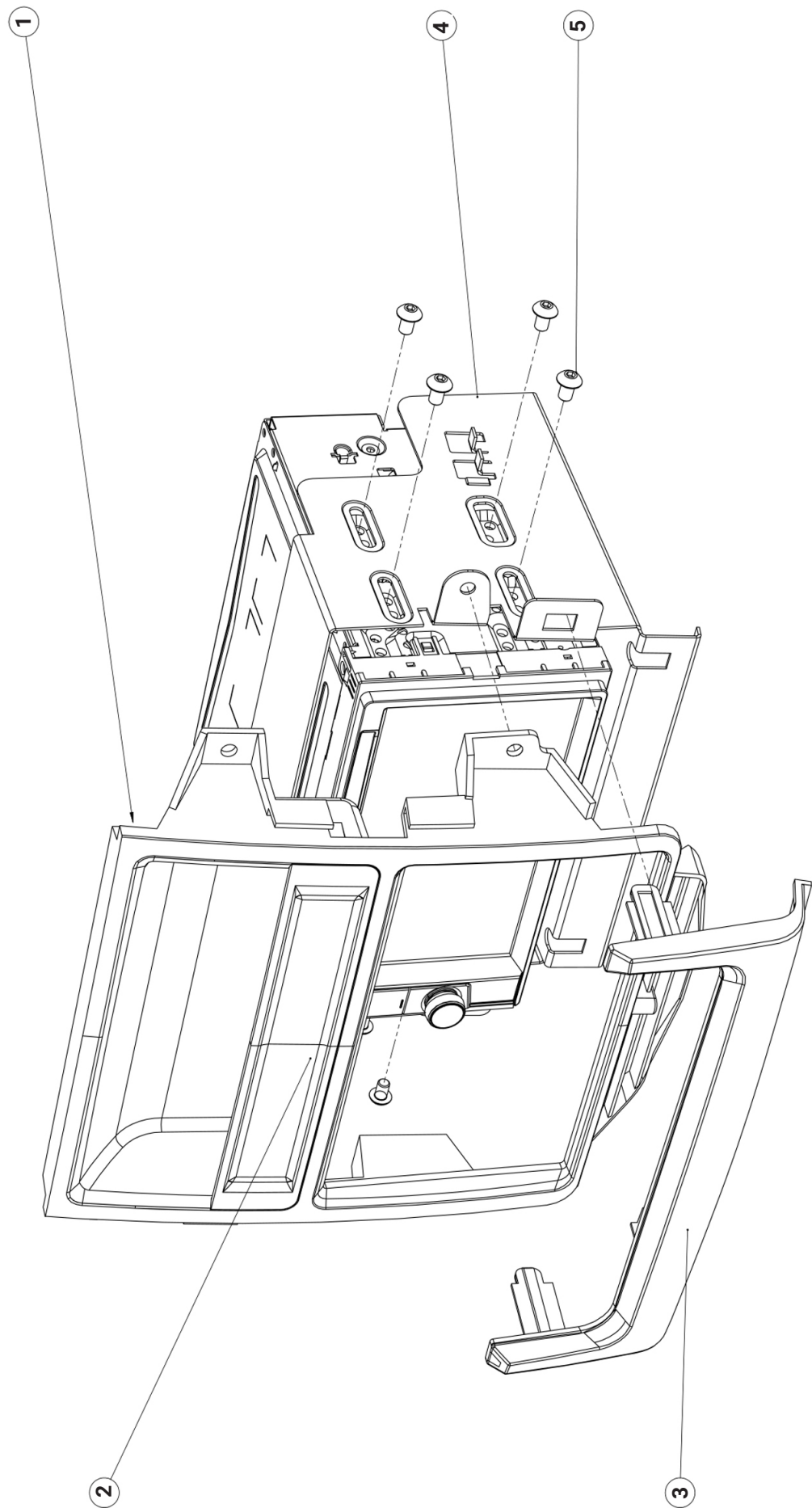
- Allows for the installation of a double DIN aftermarket stereo
- Includes mounting brackets and fitting accessories
- Finished in matt black to match vehicle dashboard

DISCLAIMER

The information provided in this document is subject to change without notice due to manufacturer changes and/or improvements to the product/s. This instruction manual is based on documented data and research. The manufacturer of this product cannot be held responsible for any changes made to the vehicle by the manufacturer or damages that may occur through the installation of this product in accordance with the steps outlined herein.

OVERVIEW DIAGRAM

CONTENTS			
1	Double DIN Fascia Panel	4	Head Unit Cage
2	Front Pocket Trim	5	8x Hex Screws
3	Bottom Trim		



PRIOR TO INSTALLATION

Read the manual prior to installation. Technical knowledge is necessary for installation. The place of installation must be free of moisture and away from heat sources. Please ensure that the correct tools are used during the installation to avoid damage to the vehicle or product. Connects2 can not be held responsible for the installation of this product.

INSTALLATION GUIDE

DASH DISASSEMBLY



Porsche Macan OEM dashboard. Ensure that appropriate areas of the dashboard are protected by suitable material to avoid damage or scuffing during the installation.



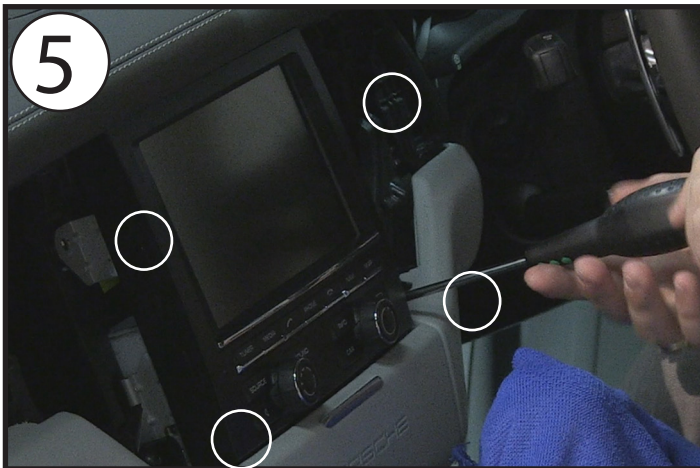
Firstly, unclip the trim panel on the passenger side of the dashboard using a panel removal tool. Pry using a panel removal tool at the location highlighted in the image. The panel will begin to come away with the air vent on the far side, and the one next to the OEM display.



Once unclipped, pull out and remove the trim panel and both passenger-side air vents. Store the piece safely for reassembly.



Next, use the panel removal tool to pry away and unclip the air vent next to the OEM display on the driver's side. Fully remove the vent/trim and store safely for reassembly.



Use a screwdriver to remove the four screws surrounding the OEM display.

Note: The top two screws must be removed to release the OEM display itself. The bottom two screws are holding the 'Porsche' branded trim piece in place.



Pull the 'Porsche' branded trim piece away from the dashboard by hand. Note that the piece was being held in place by the black plastic brackets (unscrewed in Step 5 - bottom corners) so lift and pull to remove the trim.

The trim can be discarded as it will be replaced by the new bottom trim included in the kit.



Ensure that the gear shifter is covered by an appropriate protective material and put it into reverse to allow space for the OEM display and head unit to slide out.

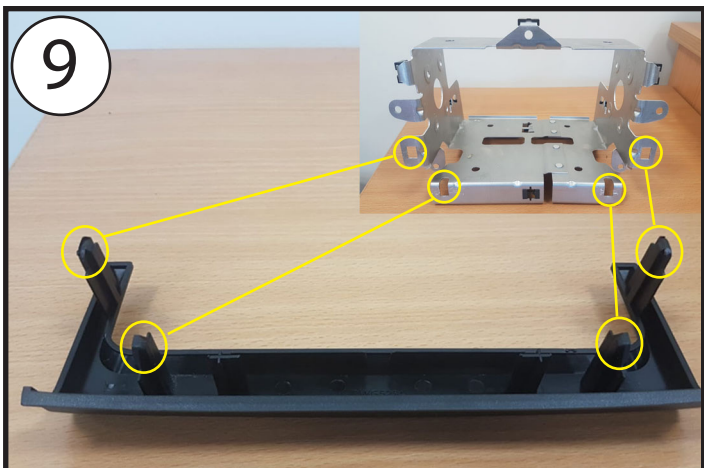
Pull the OEM display and head unit assembly out from the dashboard and disconnect all wiring.

The OEM display and unit assembly can be discarded as they will be replaced by the new aftermarket head unit and double DIN fascia panel.

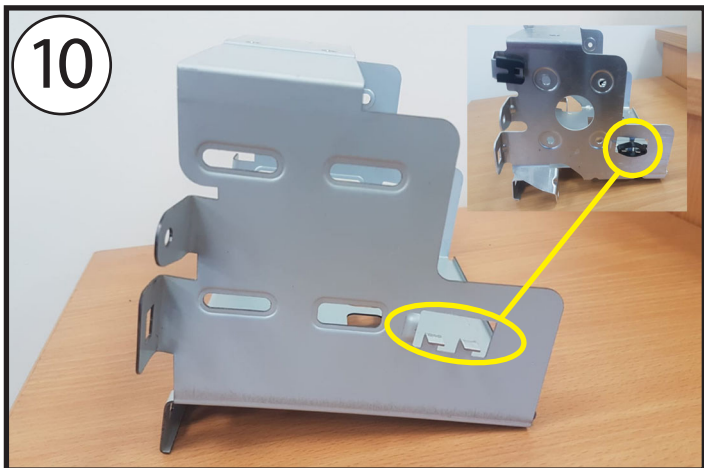


The dashboard will now be completely stripped of the OEM head unit and display and the aftermarket kit can be assembled and installed.

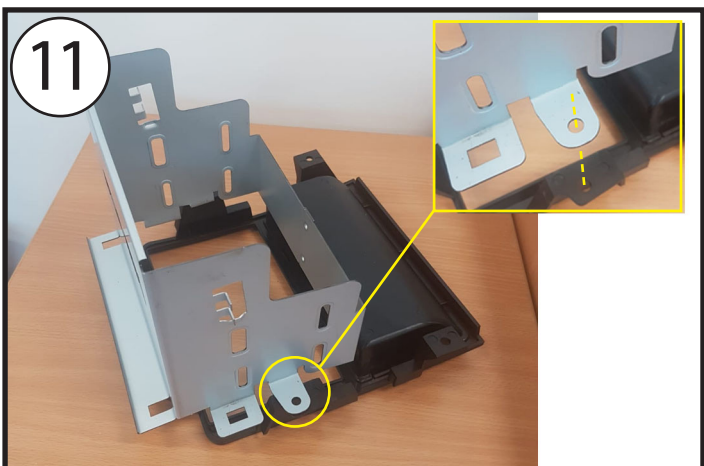
KIT ASSEMBLY



Before assembling the kit, transfer the four metal clips (circled) from the front of the OEM cage to the new bottom trim.

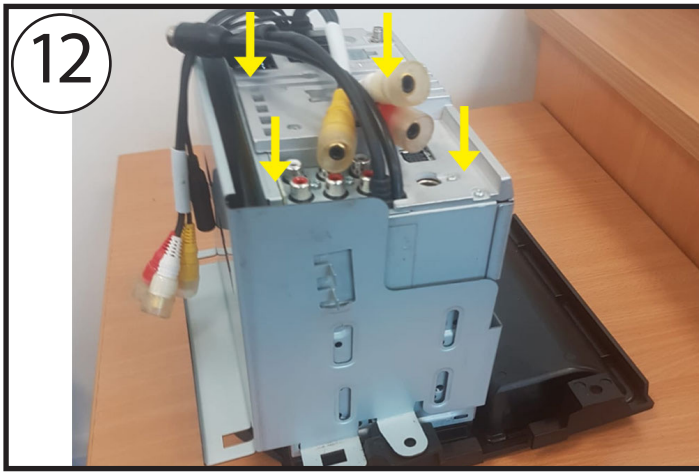


Then transfer the plastic clip from the each side of the OEM cage to each side the new head unit cage.



Firstly, lay the double DIN fascia onto a table face down and place the metal cage on top as shown in the image. Ensure that the holes on the metal cage line up with the holes on the fascia panel as shown.

Note: ensure that the surface you use for kit assembly is soft to prevent scratches or scuffs to the new head unit or fascia panel



Slide the aftermarket head unit into the fascia/cage assembly, screen-down, until it is seated correctly in the fascia panel opening and the screw holes are visible on each side of the unit.

Note: At this stage, the new fascia panel should not be attached to the kit and is being used only as a guide.



Once properly seated into position, screw the cage onto the head unit on each side (4 per side) using the x8 included Hex screws.



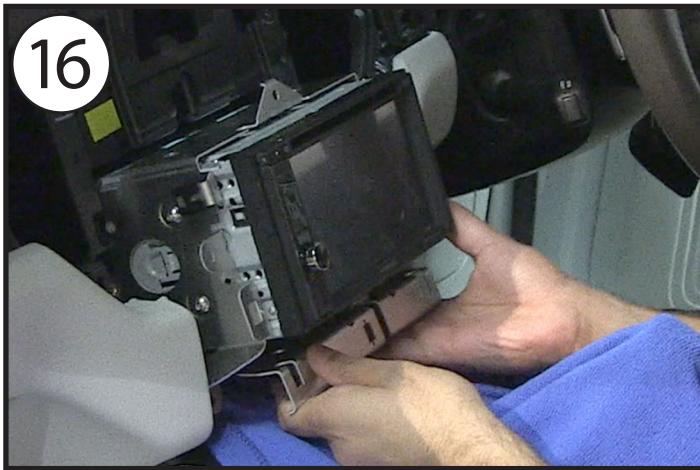
After this step is completed, the new head unit and cage assembly will be finished and this can be installed into the factory dashboard.

KIT INSTALLATION



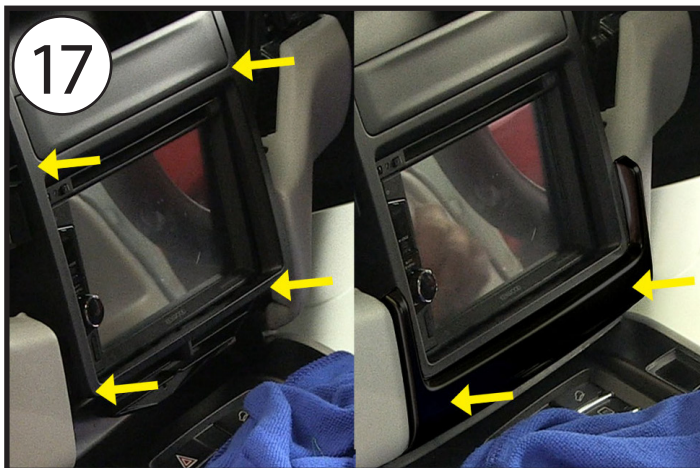
Make connections from the vehicle to the new head unit

Note: If installing a full kit, connect up the interface/s as detailed in the instruction manual supplied with the interface/s to retain key vehicle features and functions.



Once all wiring connections have been made, push the head unit and cage assembly into the dashboard cavity, taking care not to trap any wiring.

At this stage, we recommend turning on the vehicle ignition and testing the head unit for correct operation.



Once seated, the head unit can be surrounded by the new fascia panel which will clip into place around it.

At this stage, move the new bottom panel into position underneath the main fascia panel and push into place. Doing this before any screws are tightened will provide extra maneuverability and ensure a good fit for both panels.



Secure the fascia panel to the cage with one screw on each side of the assembly.



Secure the fascia panel to the dashboard using the two top screws removed during Step 5.

Need help? Visit support.connects2.com/tickets/technical



Reinstall all other dash components including the vents in the reverse order of disassembly to complete the installation

Need Help?

No problem.



support.connects2.com/tickets

Send us a ticket online 24/7

Troubleshoot with our skilled team

Get support until your issue is resolved