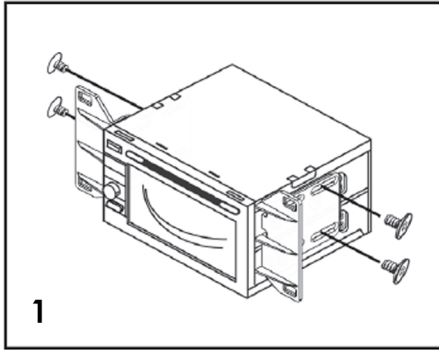


Kit Assembly



Installation Manual Double DIN Kit

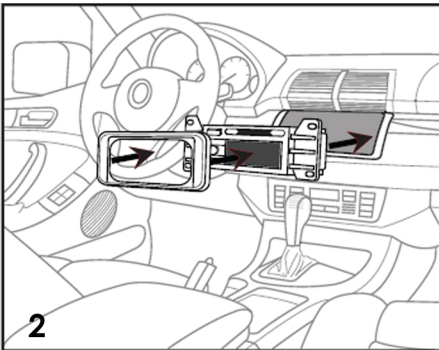
Part Number: CT24BM09



1 Mount the Double DIN radio to the supplied Double DIN brackets using the ISO screws supplied with the aftermarket radio. Note: Screws must be flush (Image 1)

2. Locate the factory wiring harness in the dash.

We recommend using a Connects2 SWC Interface (CTSBM004.2) to integrate your new radio with your system.



3. Snap the radio/bracket assembly into the dash opening (Image 2)

4. Snap the Double DIN trim plate over the radio, aligning the clips with the holes in the brackets. Take care to do this to achieve a perfect fit.

5. You have now completed your installation

**BMW X5 2000 - 2006
(E53)**

Matte Black



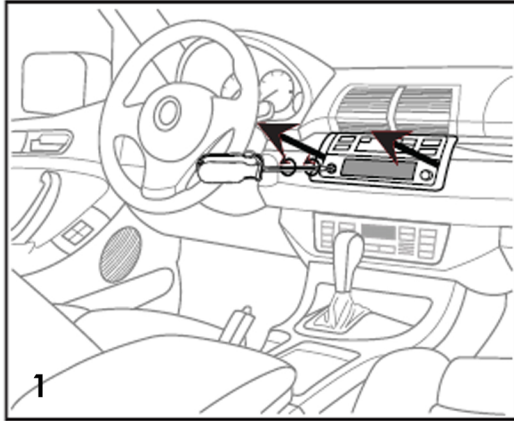
For Vehicles without OEM Navigation



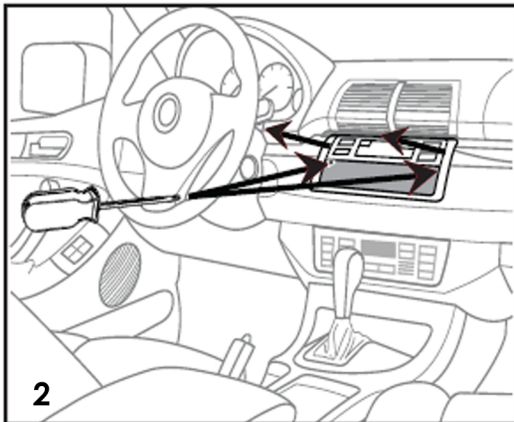
Kit Components:

BMW Double DIN Fascia
Brackets
Panel Clips
Screws

Dash Disassembly

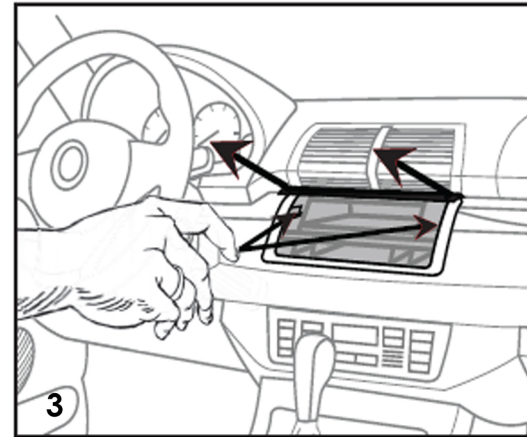


1. Disconnect the negative battery terminal to prevent an accidental short circuit
2. Remove the volume knob (Image 1)
3. Using a Torx screwdriver, turn the release lever under the shaft 90°. (Image 1)

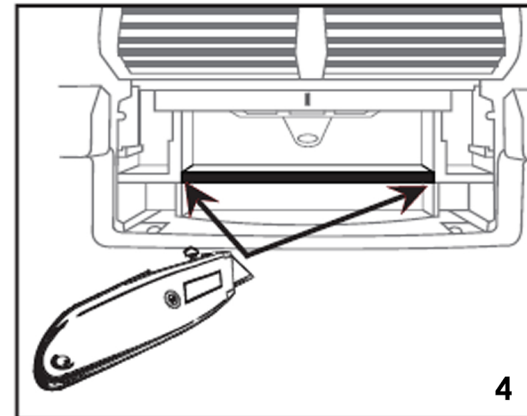


4. Leaving the screwdriver in position, pull out on the bottom of the factory head unit and remove the unit (Image 1)
5. Disconnect all wiring
6. Using the Torx screwdriver, loosen the two screws located beside the head unit guides and remove the top of the factory head unit.

7. Again, disconnect all wiring



8. With the factory radio door open, press in on the tabs at either side and remove the door (Image 3)



9. Cut and remove the section highlighted in Image 4 from the sub-dash and proceed to Kit Assembly